

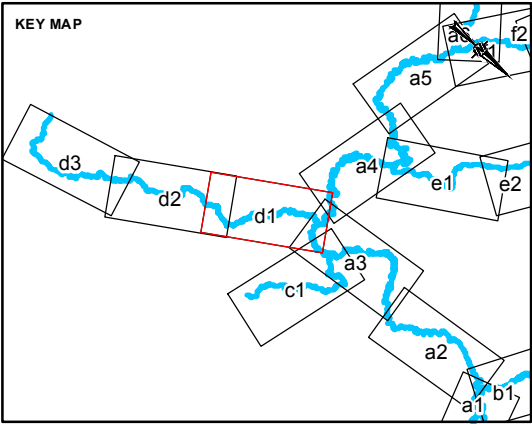
LEGEND

RIPARIAN HEALTH

- GOOD
- FAIR
- POOR

- BEAVER DAM
- BRIDGE
- CULVERT
- REACH START / END
- CONTOUR (10 m)
- OXBOW
- STUDY REACH
- STUDY AREA

- RAILROAD
- PRIMARY HIGHWAY
- SECONDARY HIGHWAY
- LOCAL ROAD
- WATERCOURSE
- WATERBODY



CLIENT

NORTH SASKATCHEWAN WATERSHED ALLIANCE

CONSULTANT

Golder Associates

YYYY-MM-DD	2016-03-21
DESIGNED	VC
PREPARED	DR
REVIEWED	CS
APPROVED	VC

REFERENCE(S)

ALBERTA DIGITAL BASE DATA OBTAINED FROM ATALIS LTD © GOVERNMENT OF ALBERTA 2014.
ALL RIGHTS RESERVED, CANVEC, GEOBASE IHS ENERGY INC.
PROJECTION: UTM ZONE 12 DATUM: NAD 83

PROJECT

AERIAL ASSESSMENT OF THE RIPARIAN AREAS OF THE VERMILION RIVER

TITLE

STRETTON CREEK RIPARIAN HEALTH

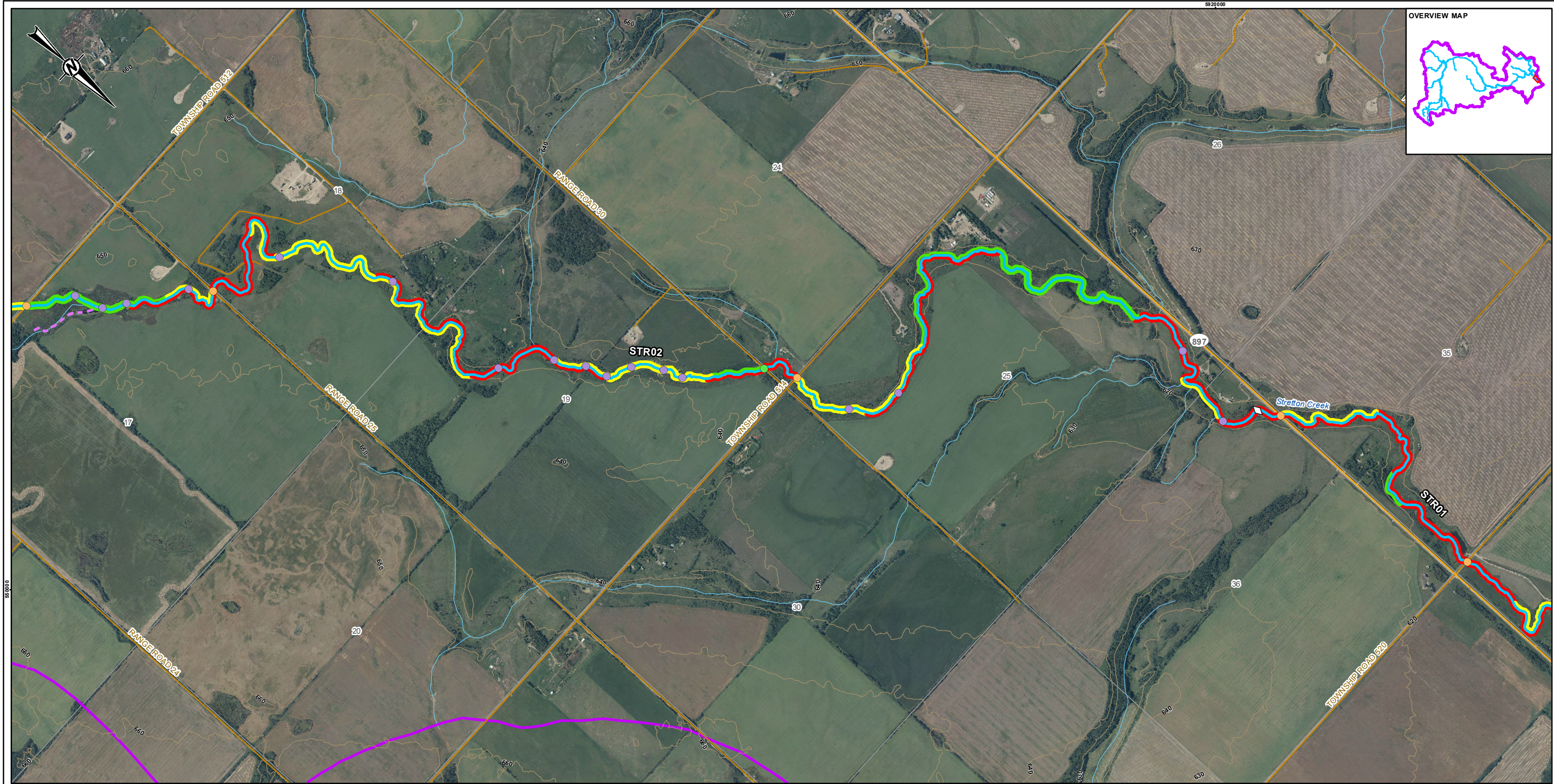
PROJECT NO.	CONTROL	REV.
1534932		0

FIGURE

A1-d1

\\P1411\1534932\Maping\KNO\Vegetation\1534932_Riparian_Health\1-20000_Rev0.mxd PRINTED ON: 2016-03-29 AT: 2:54:51 PM

IF THIS MEASUREMENT DOES NOT MATCH WHAT IS SHOWN, THE SHEET SIZE HAS BEEN MODIFIED FROM: ANSI B



PATH: I:\3015\1534932\Maping\MXD\Vegetation\1534932_Riparian_Health_v20000_Rev0.mxd PRINTED ON: 2016-03-29 AT: 2:55:13 PM

LEGEND

RIPARIAN HEALTH

GOOD

FAIR

POOR

BEAVER DAM

BRIDGE

CULVERT

REACH START / END

CONTOUR (10 m)

OXBOW

STUDY REACH

STUDY AREA

RAILROAD

PRIMARY HIGHWAY

SECONDARY HIGHWAY

LOCAL ROAD

WATERCOURSE

WATERBODY

CLIENT

NORTH SASKATCHEWAN WATERSHED ALLIANCE

CONSULTANT

YYYY-MM-DD

2016-03-21

DESIGNED

VC

PREPARED

DR

REVIEWED

CS

APPROVED

VC

0

500

1,000

1:20,000

METRES

REFERENCE(S)

ALBERTA DIGITAL BASE DATA OBTAINED FROM ATALIS LTD © GOVERNMENT OF ALBERTA 2014.
ALL RIGHTS RESERVED, CANVEC, GEOBASE IHS ENERGY INC.
PROJECTION: UTM ZONE 12 DATUM: NAD 83

PROJECT

AERIAL ASSESSMENT OF THE RIPARIAN AREAS OF THE VERMILION RIVER

TITLE

STRETTON CREEK RIPARIAN HEALTH

PROJECT NO.

1534932

CONTROL

REV.

0

FIGURE

A1-d2

25mm IF THIS MEASUREMENT DOES NOT MATCH WHAT IS SHOWN, THE SHEET SIZE HAS BEEN MODIFIED FROM: ANSI B



LEGEND

RIPARIAN HEALTH

GOOD

FAIR

POOR

BEAVER DAM

CULVERT

REACH START / END

CONTOUR (10 m)

OXBOW

STUDY REACH

STUDY AREA

RAILROAD

PRIMARY HIGHWAY

SECONDARY HIGHWAY

LOCAL ROAD

WATERCOURSE

WATERBODY

CLIENT

NORTH SASKATCHEWAN WATERSHED ALLIANCE

CONSULTANT



YYYY-MM-DD

2016-03-21

DESIGNED

VC

PREPARED

DR

REVIEWED

CS

APPROVED

VC

REFERENCE(S)

ALBERTA DIGITAL BASE DATA OBTAINED FROM ATALIS LTD © GOVERNMENT OF ALBERTA 2014.
ALL RIGHTS RESERVED, CANVEC, GEOBASE IHS ENERGY INC.
PROJECTION: UTM ZONE 12 DATUM: NAD 83

PROJECT

AERIAL ASSESSMENT OF THE RIPARIAN AREAS OF THE VERMILION RIVER

TITLE

STRETTON CREEK RIPARIAN HEALTH

PROJECT NO.

1534932

CONTROL

REV.

0

FIGURE

A1-d3

PATH: I:\2015\1534932\Maping\MXD\Vegetation\1534932_Riparian_Health_v20000_Rev0.mxd PRINTED ON: 2016-03-29 AT: 2:55:29 PM

IF THIS MEASUREMENT DOES NOT MATCH WHAT IS SHOWN, THE SHEET SIZE HAS BEEN MODIFIED FROM: ANSI B