

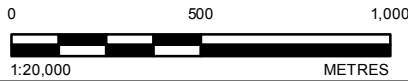
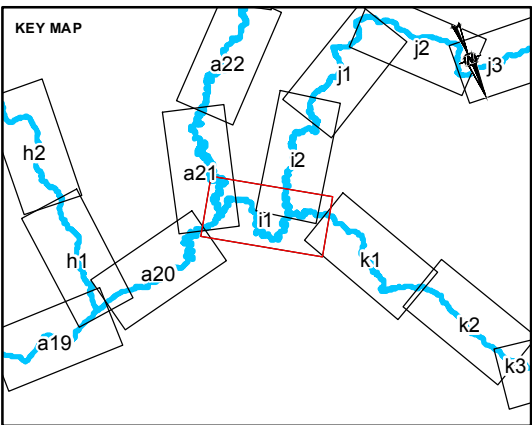
**LEGEND**

**RIPARIAN HEALTH**

- GOOD
- FAIR
- POOR

- BEAVER DAM
- BRIDGE
- CULVERT
- REACH START / END
- CONTOUR (10 m)
- OXBOW
- STUDY REACH
- STUDY AREA

- RAILROAD
- PRIMARY HIGHWAY
- SECONDARY HIGHWAY
- LOCAL ROAD
- WATERCOURSE
- WATERBODY



CLIENT  
NORTH SASKATCHEWAN WATERSHED ALLIANCE

CONSULTANT	YYYY-MM-DD	2016-03-21
	DESIGNED	VC
	PREPARED	DR
	REVIEWED	CS
	APPROVED	VC



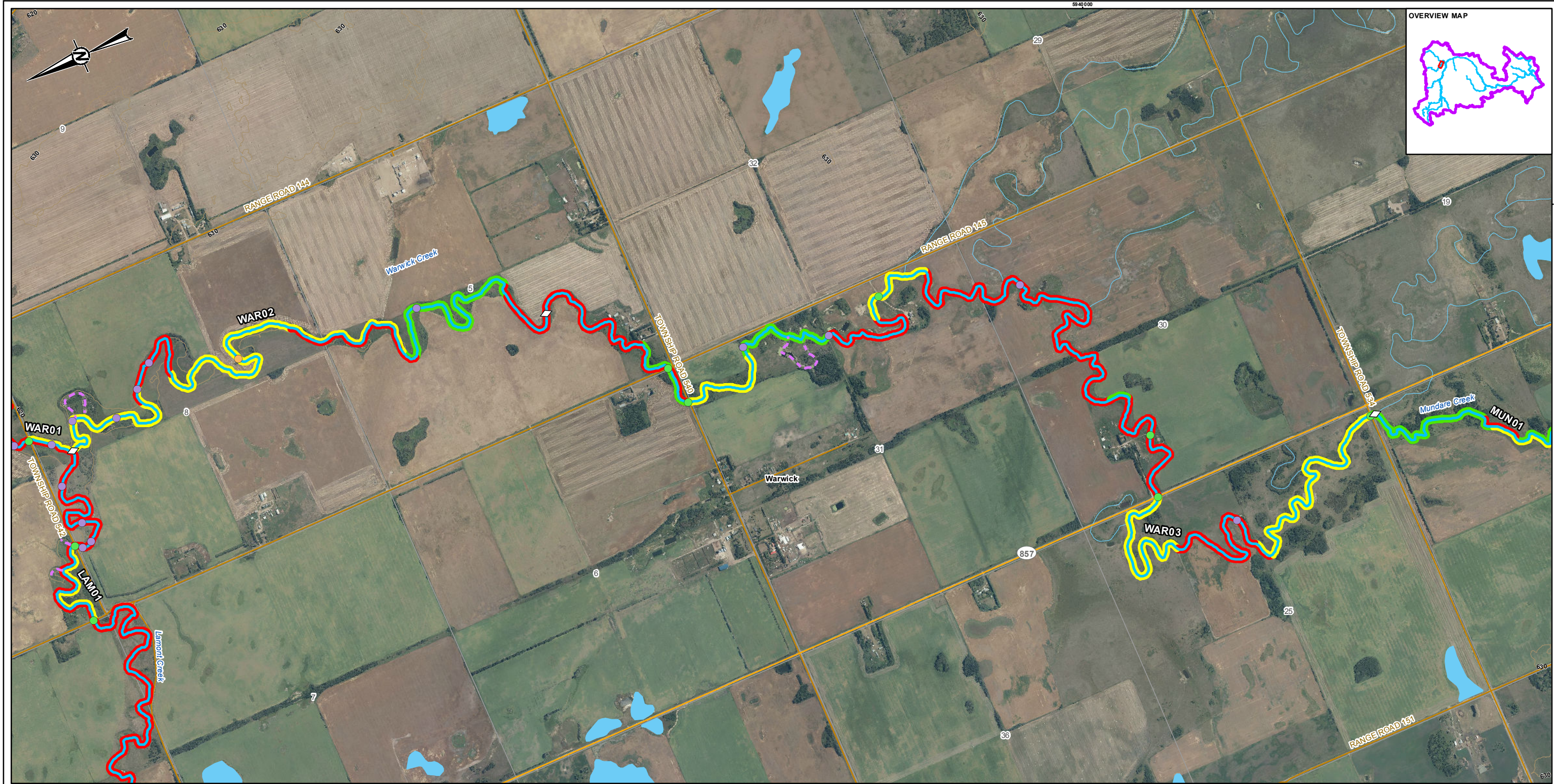
**REFERENCE(S)**  
ALBERTA DIGITAL BASE DATA OBTAINED FROM ATALIS LTD © GOVERNMENT OF ALBERTA 2014.  
ALL RIGHTS RESERVED, CANVEC, GEOBASE IHS ENERGY INC.  
PROJECTION: UTM ZONE 12 DATUM: NAD 83

PROJECT  
AERIAL ASSESSMENT OF THE RIPARIAN AREAS OF THE VERMILION RIVER

TITLE  
**WARWICK CREEK RIPARIAN HEALTH**

PROJECT NO. 1534932 CONTROL REV. 0 FIGURE A11-i1





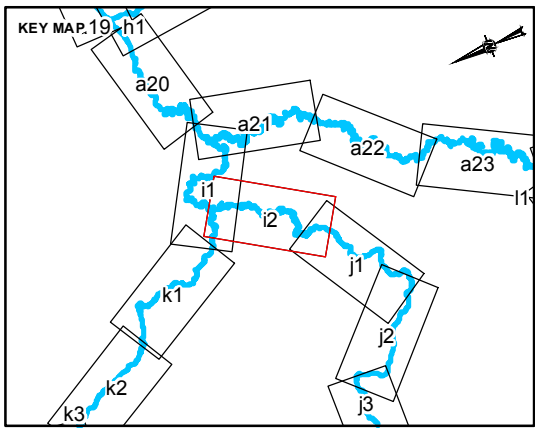
**LEGEND**

**RIPARIAN HEALTH**

- GOOD
- FAIR
- POOR

- BEAVER DAM
- BRIDGE
- CULVERT
- REACH START / END
- CONTOUR (10 m)
- OXBOW
- STUDY REACH
- STUDY AREA

- RAILROAD
- PRIMARY HIGHWAY
- SECONDARY HIGHWAY
- LOCAL ROAD
- WATERCOURSE
- WATERBODY



CLIENT

**NORTH SASKATCHEWAN WATERSHED ALLIANCE**

CONSULTANT

**Golder Associates**

YYYY-MM-DD	2016-03-21
DESIGNED	VC
PREPARED	DR
REVIEWED	CS
APPROVED	VC

**REFERENCE(S)**

ALBERTA DIGITAL BASE DATA OBTAINED FROM ATALIS LTD © GOVERNMENT OF ALBERTA 2014.  
ALL RIGHTS RESERVED, CANVEC, GEOBASE IHS ENERGY INC.  
PROJECTION: UTM ZONE 12 DATUM: NAD 83

PROJECT

**AERIAL ASSESSMENT OF THE RIPARIAN AREAS OF THE VERMILION RIVER**

TITLE

**WARWICK CREEK RIPARIAN HEALTH**

PROJECT NO.	CONTROL	REV.
1534932		0

FIGURE

**A1-i2**

PATH: I:\2016\1534932\Maping\MXD\Vegetation\1534932\_Riparian\_Health\_20000\_Rev0.mxd PRINTED ON: 2016-03-29 AT: 3:13:32 PM

25mm IF THIS MEASUREMENT DOES NOT MATCH WHAT IS SHOWN, THE SHEET SIZE HAS BEEN MODIFIED FROM: ANSI B