

LEGEND

RIPARIAN HEALTH

GOOD

FAIR

POOR

BEAVER DAM

BRIDGE

CULVERT

FORD

REACH START / END

CONTOUR (10 m)

STUDY REACH

STUDY AREA

RAILROAD

PRIMARY HIGHWAY

SECONDARY HIGHWAY

LOCAL ROAD

WATERCOURSE

WATERBODY

CLIENT

NORTH SASKATCHEWAN WATERSHED ALLIANCE

CONSULTANT

YYYY-MM-DD

2016-03-21

DESIGNED

VC

PREPARED

DR

REVIEWED

CS

APPROVED

VC

REFERENCE(S)

ALBERTA DIGITAL BASE DATA OBTAINED FROM ATALIS LTD © GOVERNMENT OF ALBERTA 2014.  
ALL RIGHTS RESERVED, CANVEC, GEOBASE IHS ENERGY INC.  
PROJECTION: UTM ZONE 12 DATUM: NAD 83

PROJECT

AERIAL ASSESSMENT OF THE RIPARIAN AREAS OF THE VERMILION RIVER

TITLE

MUNDARE CREEK RIPARIAN HEALTH

PROJECT NO.

1534932

CONTROL

REV.

0

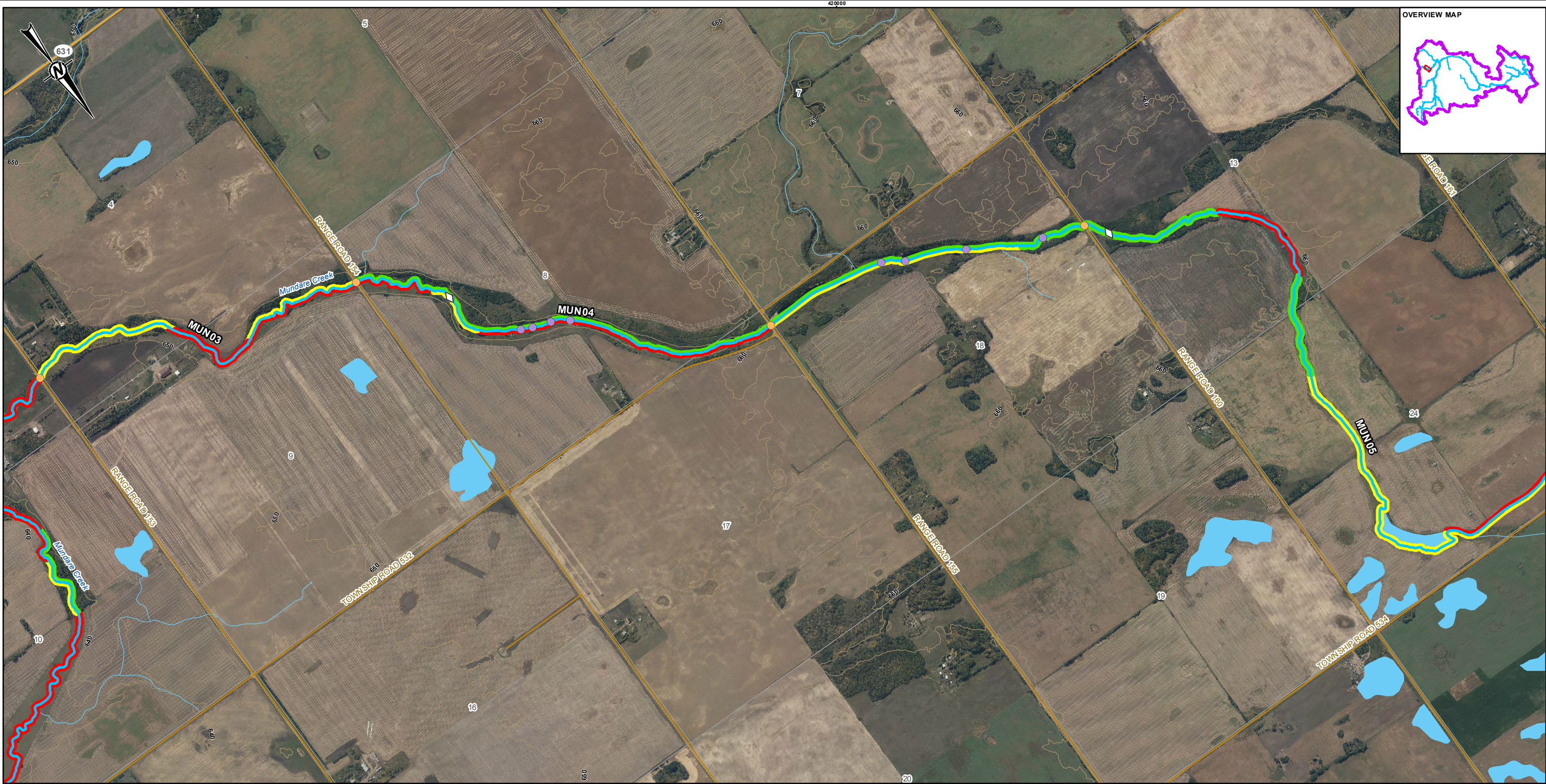
FIGURE

A1-j1

PATH: I:\2015\1534932\Maping\KVC\Vegetation\1534932\_Riparian\_Health\20000\_Rev0.mxd PRINTED ON: 2016-03-29 AT: 3:14:30 PM

25mm IF THIS MEASUREMENT DOES NOT MATCH WHAT IS SHOWN, THE SHEET SIZE HAS BEEN MODIFIED FROM: ANSI B





LEGEND

RIPARIAN HEALTH

GOOD

FAIR

POOR

BEAVER DAM

CULVERT

REACH START / END

CONTOUR (10 m)

STUDY REACH

STUDY AREA

RAILROAD

PRIMARY HIGHWAY

SECONDARY HIGHWAY

LOCAL ROAD

WATERCOURSE

WATERBODY

CLIENT

NORTH SASKATCHEWAN WATERSHED ALLIANCE

CONSULTANT

0

500

1,000

1:20,000

METRES

REFERENCE(S)

ALBERTA DIGITAL BASE DATA OBTAINED FROM ATALIS LTD © GOVERNMENT OF ALBERTA 2014.  
ALL RIGHTS RESERVED, CANVEC, GEOBASE IHS ENERGY INC.  
PROJECTION: UTM ZONE 12 DATUM: NAD 83

PROJECT

AERIAL ASSESSMENT OF THE RIPARIAN AREAS OF THE VERMILION RIVER

TITLE

MUNDARE CREEK RIPARIAN HEALTH

PROJECT NO.

1534932

CONTROL

REV.

0

FIGURE

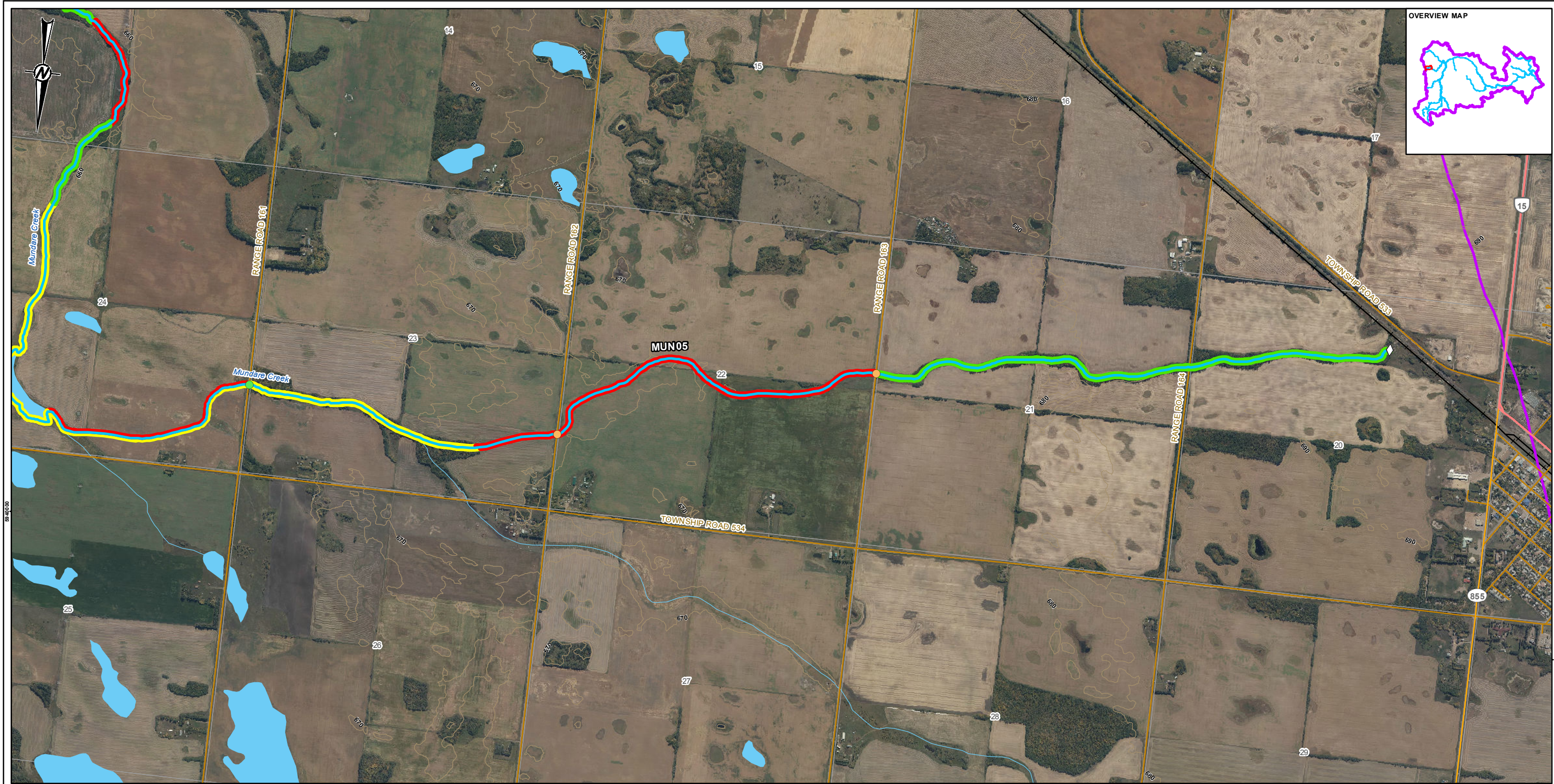
A1-j2

25mm

IF THIS MEASUREMENT DOES NOT MATCH WHAT IS SHOWN, THE SHEET SIZE HAS BEEN MODIFIED FROM ANSI B

PATH: I:\2016\1534932\Mapping\MXD\Vegetation\1534932\_Riparian\_Health\_v20000\_Rev0.mxd PRINTED ON: 2016-03-29 AT: 3:14:59 PM





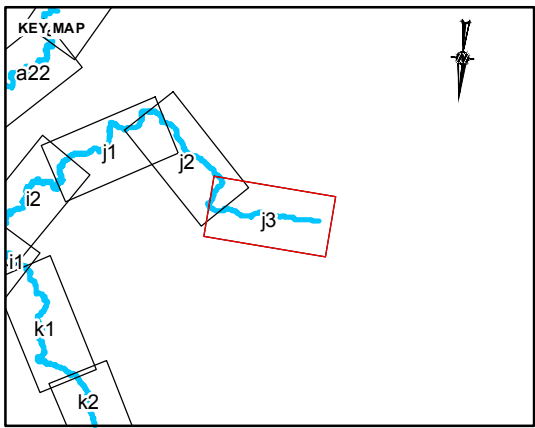
**LEGEND**

**RIPARIAN HEALTH**

- GOOD
- FAIR
- POOR

- BRIDGE
- CULVERT
- REACH START / END
- CONTOUR (10 m)
- STUDY REACH
- STUDY AREA

- RAILROAD
- PRIMARY HIGHWAY
- SECONDARY HIGHWAY
- LOCAL ROAD
- WATERCOURSE
- WATERBODY



CLIENT  
NORTH SASKATCHEWAN WATERSHED ALLIANCE

CONSULTANT

0 500 1,000  
1:20,000 METRES

|            |            |
|------------|------------|
| YYYY-MM-DD | 2016-03-21 |
| DESIGNED   | VC         |
| PREPARED   | DR         |
| REVIEWED   | CS         |
| APPROVED   | VC         |

**REFERENCE(S)**  
ALBERTA DIGITAL BASE DATA OBTAINED FROM ATALIS LTD © GOVERNMENT OF ALBERTA 2014.  
ALL RIGHTS RESERVED, CANVEC, GEOBASE IHS ENERGY INC.  
PROJECTION: UTM ZONE 12 DATUM: NAD 83

PROJECT  
AERIAL ASSESSMENT OF THE RIPARIAN AREAS OF THE VERMILION RIVER

TITLE  
**MUNDARE CREEK RIPARIAN HEALTH**

|                        |         |           |                        |
|------------------------|---------|-----------|------------------------|
| PROJECT NO.<br>1534932 | CONTROL | REV.<br>0 | FIGURE<br><b>A1-j3</b> |
|------------------------|---------|-----------|------------------------|

PATH: I:\2016\1534932\Mapping\MXD\Vegetation\1534932\_Riparian\_Health\_1-20000\_Rev0.mxd PRINTED ON: 2016-03-29 AT: 3:15:25 PM

IF THIS MEASUREMENT DOES NOT MATCH WHAT IS SHOWN, THE SHEET SIZE HAS BEEN MODIFIED FROM: ANSI B