



LEGEND

RIPARIAN HEALTH

GOOD

FAIR

POOR

BRIDGE

CONTOUR (10 m)

STUDY REACH

STUDY AREA

RAILROAD

PRIMARY HIGHWAY

SECONDARY HIGHWAY

LOCAL ROAD

WATERCOURSE

WATERBODY

CLIENT
NORTH SASKATCHEWAN WATERSHED ALLIANCE

CONSULTANT	YYYY-MM-DD	2016-03-21
	DESIGNED	VC
	PREPARED	DR
	REVIEWED	CS
	APPROVED	VC

REFERENCE(S)
ALBERTA DIGITAL BASE DATA OBTAINED FROM ATALIS LTD © GOVERNMENT OF ALBERTA 2014.
ALL RIGHTS RESERVED, CANVEC, GEOBASE IHS ENERGY INC.
PROJECTION: UTM ZONE 12 DATUM: NAD 83

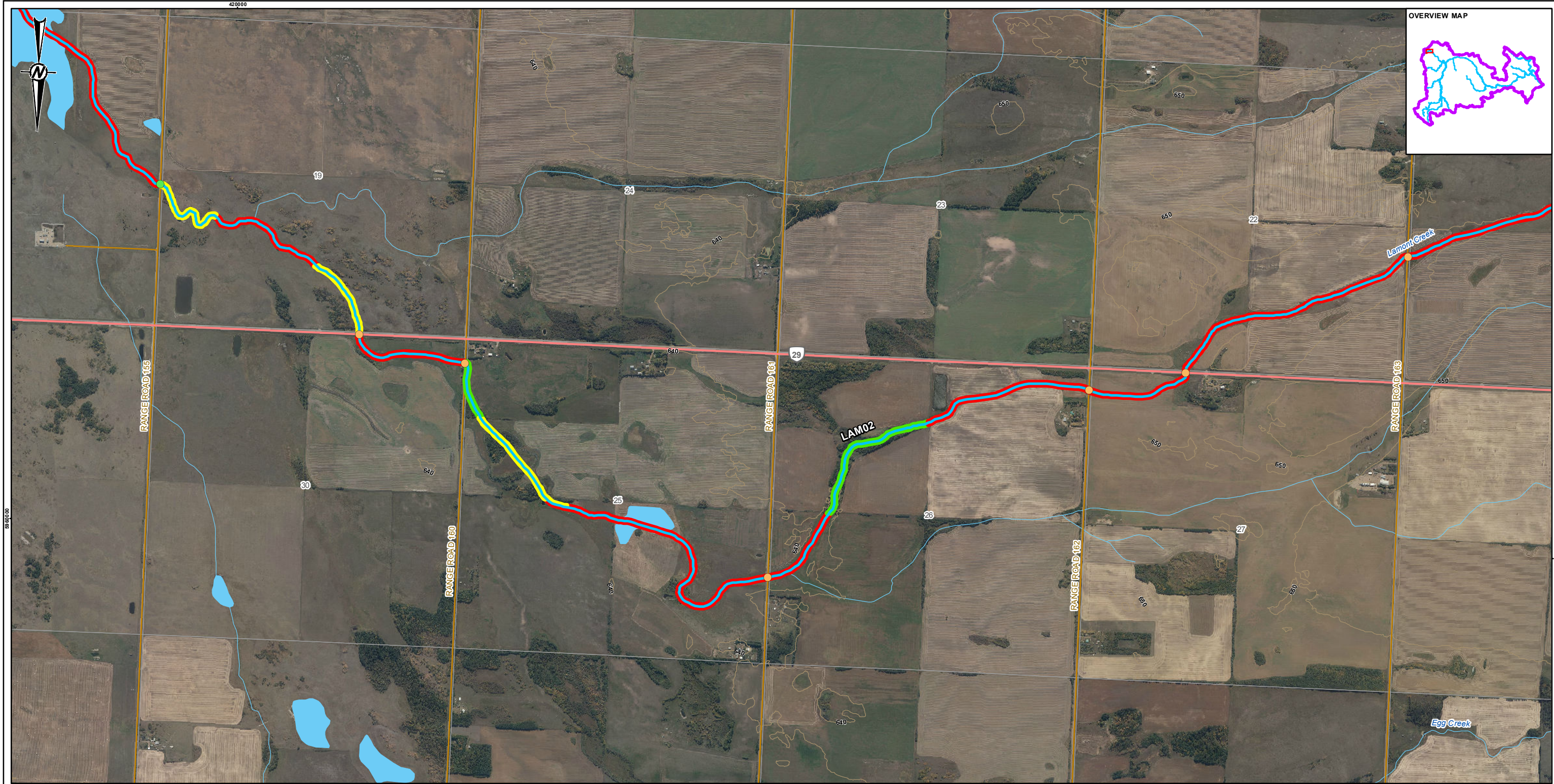
PROJECT
AERIAL ASSESSMENT OF THE RIPARIAN AREAS OF THE VERMILION RIVER

TITLE
LAMONT CREEK RIPARIAN HEALTH

PROJECT NO. 1534932	CONTROL	REV. 0	FIGURE A1-k2
------------------------	---------	-----------	-----------------

PATH: I:\2015\1534932\Maping\MXD\Vegetation\1534932_Riparian_Health_v20000_Rev0.mxd PRINTED ON: 2016-03-29 AT: 3:17:12 PM

IF THIS MEASUREMENT DOES NOT MATCH WHAT IS SHOWN, THE SHEET SIZE HAS BEEN MODIFIED FROM: ANSI B



LEGEND

RIPARIAN HEALTH

GOOD

FAIR

POOR

BRIDGE

CULVERT

CONTOUR (10 m)

STUDY REACH

STUDY AREA

RAILROAD

PRIMARY HIGHWAY

SECONDARY HIGHWAY

LOCAL ROAD

WATERCOURSE

WATERBODY

CLIENT

NORTH SASKATCHEWAN WATERSHED ALLIANCE

CONSULTANT

YYYY-MM-DD

2016-03-21

DESIGNED

VC

PREPARED

DR

REVIEWED

CS

APPROVED

VC

REFERENCE(S)

ALBERTA DIGITAL BASE DATA OBTAINED FROM ATALIS LTD © GOVERNMENT OF ALBERTA 2014.
ALL RIGHTS RESERVED, CANVEC, GEOBASE IHS ENERGY INC.
PROJECTION: UTM ZONE 12 DATUM: NAD 83

PROJECT

AERIAL ASSESSMENT OF THE RIPARIAN AREAS OF THE VERMILION RIVER

TITLE

LAMONT CREEK RIPARIAN HEALTH

PROJECT NO.

1534932

CONTROL

REV.

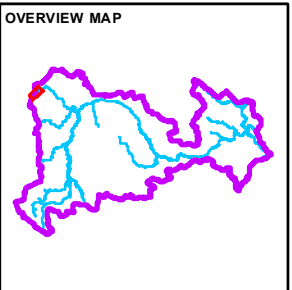
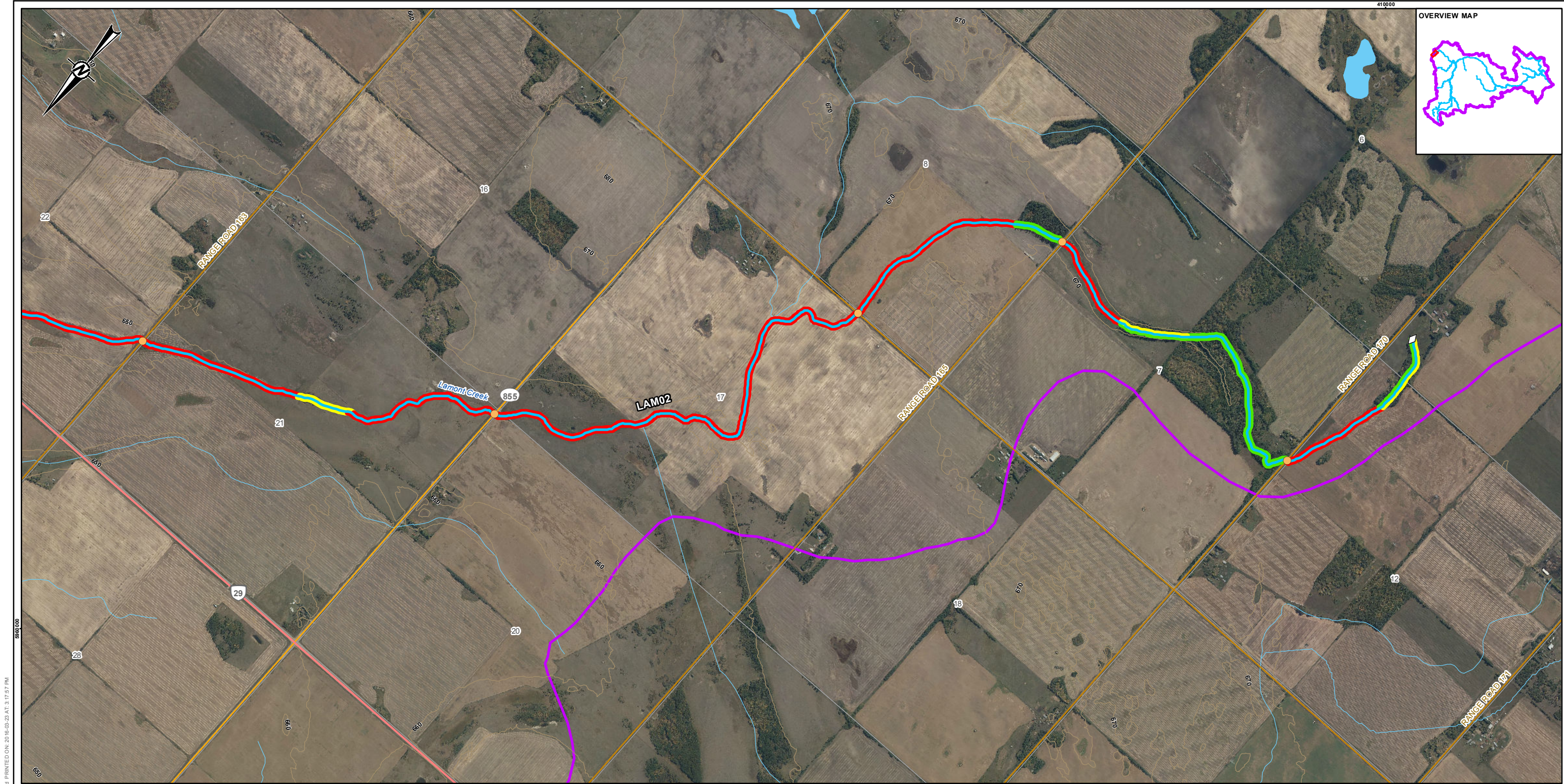
0

FIGURE

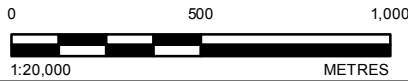
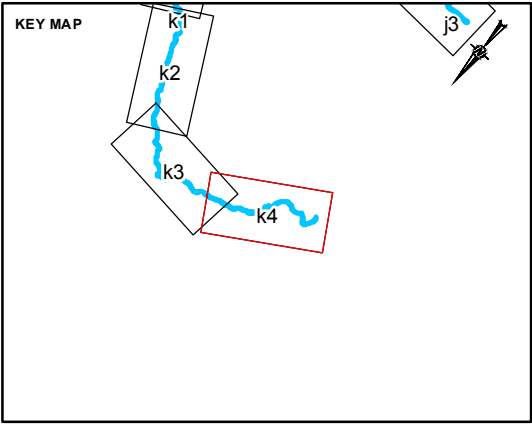
A1-k3

PATH: I:\2016\1534932\Mapping\MXD\Vegetation\1534932_Riparian_Health_v20000_Rev0.mxd PRINTED ON: 2016-03-29 AT: 3:17:31 PM

IF THIS MEASUREMENT DOES NOT MATCH WHAT IS SHOWN, THE SHEET SIZE HAS BEEN MODIFIED FROM: ANSI B



- LEGEND**
- RIPARIAN HEALTH**
- GOOD
 - FAIR
 - POOR
- CULVERT
 - REACH START / END
 - CONTOUR (10 m)
 - STUDY REACH
 - STUDY AREA
- RAILROAD
 - PRIMARY HIGHWAY
 - SECONDARY HIGHWAY
 - LOCAL ROAD
 - WATERCOURSE
 - WATERBODY



CLIENT
NORTH SASKATCHEWAN WATERSHED ALLIANCE

CONSULTANT	YYYY-MM-DD	2016-03-21
	DESIGNED	VC
	PREPARED	DR
	REVIEWED	CS
	APPROVED	VC



REFERENCE(S)
ALBERTA DIGITAL BASE DATA OBTAINED FROM ATALIS LTD © GOVERNMENT OF ALBERTA 2014.
ALL RIGHTS RESERVED, CANVEC, GEOBASE IHS ENERGY INC.
PROJECTION: UTM ZONE 12 DATUM: NAD 83

PROJECT
AERIAL ASSESSMENT OF THE RIPARIAN AREAS OF THE
VERMILION RIVER

TITLE
LAMONT CREEK RIPARIAN HEALTH

PROJECT NO. 1534932	CONTROL	REV. 0	FIGURE A1-k4
------------------------	---------	-----------	------------------------