

LEGEND

RIPARIAN HEALTH

GOOD

FAIR

POOR

BEAVER DAM

BRIDGE

CULVERT

FORD

REACH START / END

CONTOUR (10 m)

STUDY REACH

STUDY AREA

RAILROAD

PRIMARY HIGHWAY

SECONDARY HIGHWAY

LOCAL ROAD

WATERCOURSE

WATERBODY

CLIENT
NORTH SASKATCHEWAN WATERSHED ALLIANCE

CONSULTANT

0 500 1,000
1:20,000 METRES

REFERENCE(S)
ALBERTA DIGITAL BASE DATA OBTAINED FROM ATALIS LTD © GOVERNMENT OF ALBERTA 2014.
ALL RIGHTS RESERVED, CANVEC, GEOBASE IHS ENERGY INC.
PROJECTION: UTM ZONE 12 DATUM: NAD 83

PROJECT
AERIAL ASSESSMENT OF THE RIPARIAN AREAS OF THE VERMILION RIVER

TITLE
HOLDEN DRAINAGE RIPARIAN HEALTH

PROJECT NO.
1534932

CONTROL

REV.
0

FIGURE
A1-n1

PATH: I:\2015\1534932\Maping\MXD\Vegetation\1534932_Riparian_Health.mxd PRINTED ON: 2016-03-29 AT: 3:23:15 PM

25mm IF THIS MEASUREMENT DOES NOT MATCH WHAT IS SHOWN, THE SHEET SIZE HAS BEEN MODIFIED FROM ANSI B



LEGEND

RIPARIAN HEALTH

GOOD

FAIR

POOR

BEAVER DAM

BRIDGE

CULVERT

DAM

REACH START / END

WASTEWATER TREATMENT

CONTOUR (10 m)

STUDY REACH

STUDY AREA

RAILROAD

PRIMARY HIGHWAY

SECONDARY HIGHWAY

LOCAL ROAD

WATERCOURSE

WATERBODY

CLIENT
NORTH SASKATCHEWAN WATERSHED ALLIANCE

CONSULTANT

YYYY-MM-DD

DESIGNED

PREPARED

REVIEWED

APPROVED

2016-03-21

VC

DR

CS

VC

REFERENCE(S)
ALBERTA DIGITAL BASE DATA OBTAINED FROM ATALIS LTD © GOVERNMENT OF ALBERTA 2014.
ALL RIGHTS RESERVED, CANVEC, GEOBASE IHS ENERGY INC.
PROJECTION: UTM ZONE 12 DATUM: NAD 83

PROJECT
AERIAL ASSESSMENT OF THE RIPARIAN AREAS OF THE VERMILION RIVER

TITLE
HOLDEN DRAINAGE RIPARIAN HEALTH

PROJECT NO.
1534932

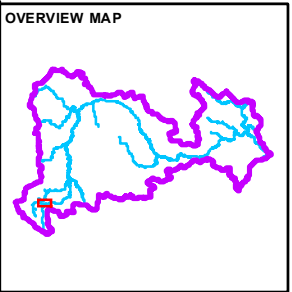
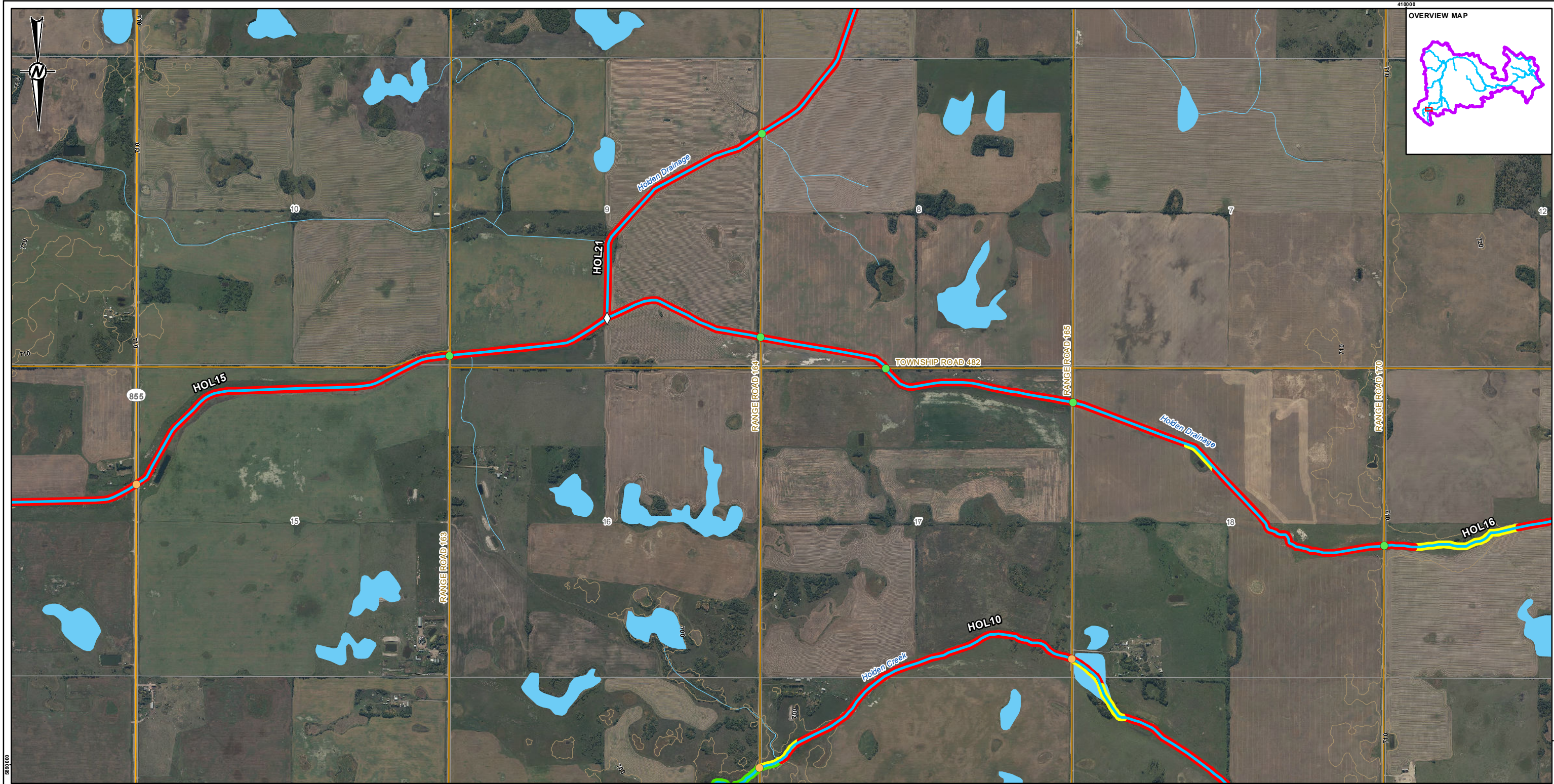
CONTROL

REV.
0

FIGURE
A1-n2

PATH: I:\2015\1534932\Maping\MXD\Vegetation\1534932_Riparian_Health_v20000_Rev0.mxd PRINTED ON: 2016-03-29 AT: 3:23:37 PM

IF THIS MEASUREMENT DOES NOT MATCH WHAT IS SHOWN, THE SHEET SIZE HAS BEEN MODIFIED FROM: ANSI B



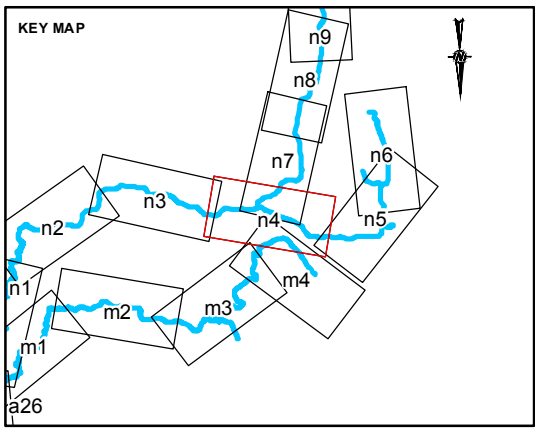
LEGEND

RIPARIAN HEALTH

- GOOD
- FAIR
- POOR

- BRIDGE
- CULVERT
- REACH START / END
- CONTOUR (10 m)
- STUDY REACH
- STUDY AREA

- RAILROAD
- PRIMARY HIGHWAY
- SECONDARY HIGHWAY
- LOCAL ROAD
- WATERCOURSE
- WATERBODY



CLIENT
NORTH SASKATCHEWAN WATERSHED ALLIANCE

CONSULTANT

0 500 1,000
1:20,000 METRES

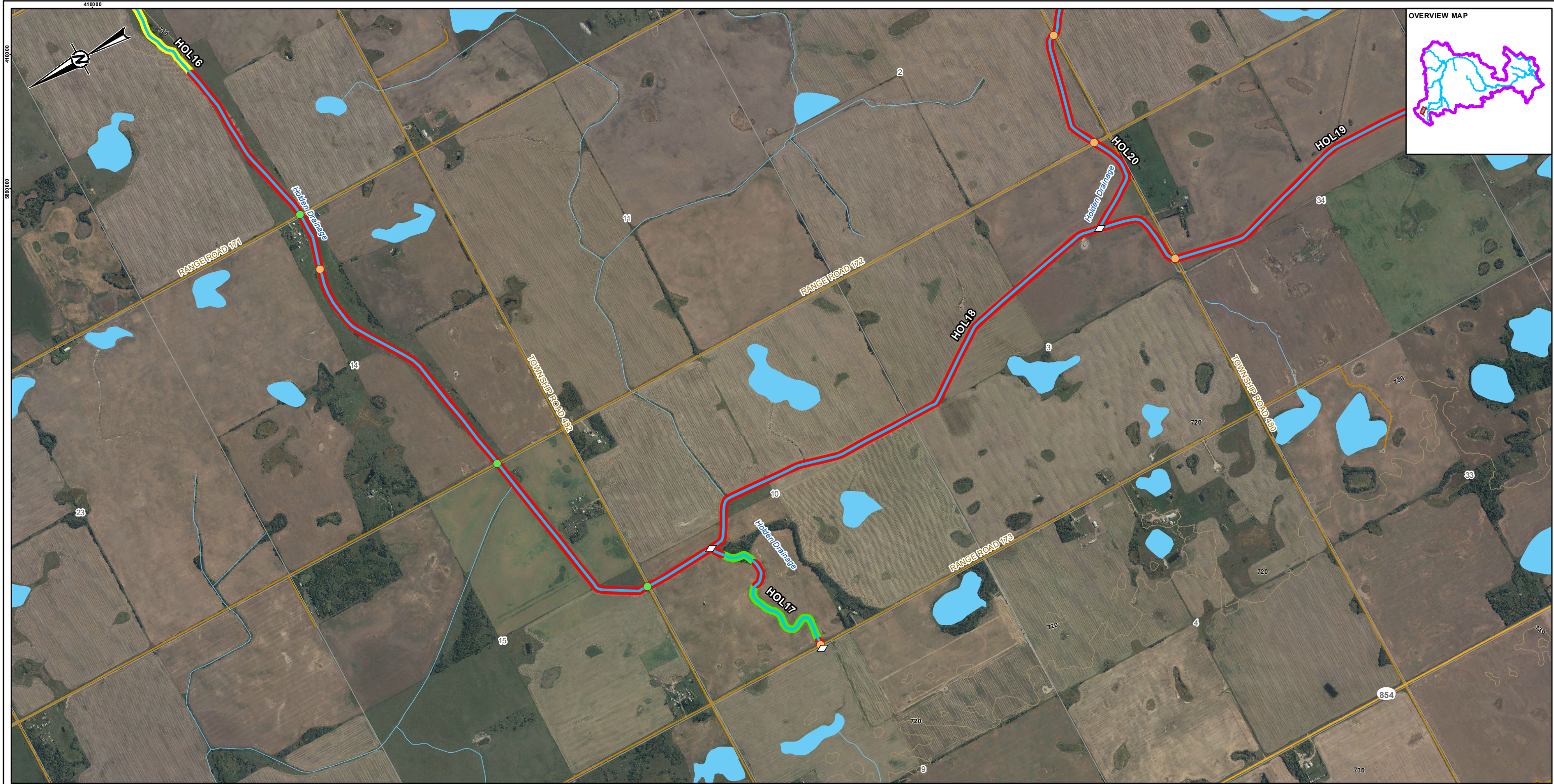
YYYY-MM-DD	2016-03-21
DESIGNED	VC
PREPARED	DR
REVIEWED	CS
APPROVED	VC

REFERENCE(S)
ALBERTA DIGITAL BASE DATA OBTAINED FROM ATALIS LTD © GOVERNMENT OF ALBERTA 2014.
ALL RIGHTS RESERVED, CANVEC, GEOBASE IHS ENERGY INC.
PROJECTION: UTM ZONE 12 DATUM: NAD 83

PROJECT
AERIAL ASSESSMENT OF THE RIPARIAN AREAS OF THE VERMILION RIVER

TITLE
HOLDEN DRAINAGE RIPARIAN HEALTH

PROJECT NO. 1534932	CONTROL	REV. 0	FIGURE A1-n4
------------------------	---------	-----------	------------------------



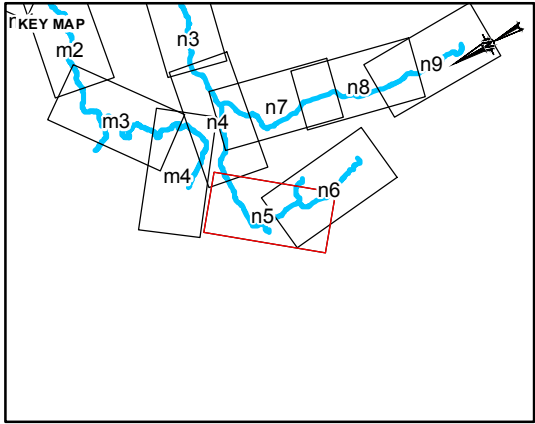
LEGEND

RIPARIAN HEALTH

- GOOD
- FAIR
- POOR

- BRIDGE
- CULVERT
- REACH START / END
- CONTOUR (10 m)
- STUDY REACH
- STUDY AREA


- RAILROAD
- PRIMARY HIGHWAY
- SECONDARY HIGHWAY
- LOCAL ROAD
- WATERCOURSE
- WATERBODY



CLIENT

NORTH SASKATCHEWAN WATERSHED ALLIANCE

CONSULTANT

 **Golder Associates**

YYYY-MM-DD	2016-03-21
DESIGNED	VC
PREPARED	DR
REVIEWED	CS
APPROVED	VC

REFERENCE(S)

ALBERTA DIGITAL BASE DATA OBTAINED FROM ATALIS LTD © GOVERNMENT OF ALBERTA 2014.
ALL RIGHTS RESERVED, CANVEC, GEOBASE IHS ENERGY INC.
PROJECTION: UTM ZONE 12 DATUM: NAD 83

PROJECT

AERIAL ASSESSMENT OF THE RIPARIAN AREAS OF THE VERMILION RIVER

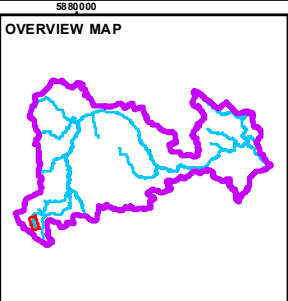
TITLE

HOLDEN DRAINAGE RIPARIAN HEALTH

PROJECT NO.	CONTROL	REV.	FIGURE
1534932		0	A1-n5

PATH: I:\2015\1534932\Mapping\KVC\Vegetation\1534932_Riparian_Health\20000_Rev0.mxd PRINTED ON: 2016-03-29 AT: 3:24:25 PM

IF THIS MEASUREMENT DOES NOT MATCH WHAT IS SHOWN, THE SHEET SIZE HAS BEEN MODIFIED FROM: ANSI B



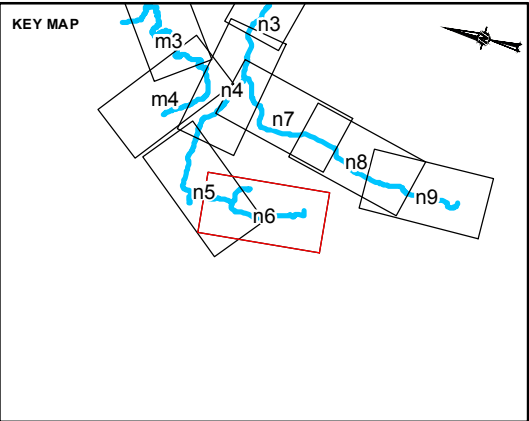
LEGEND

RIPARIAN HEALTH

- GOOD
- FAIR
- POOR

- CULVERT
- REACH START / END
- CONTOUR (10 m)
- STUDY REACH
- STUDY AREA

- RAILROAD
- PRIMARY HIGHWAY
- SECONDARY HIGHWAY
- LOCAL ROAD
- WATERCOURSE
- WATERBODY



CLIENT
NORTH SASKATCHEWAN WATERSHED ALLIANCE

CONSULTANT	YYYY-MM-DD	2016-03-21
	DESIGNED	VC
	PREPARED	DR
	REVIEWED	CS
	APPROVED	VC



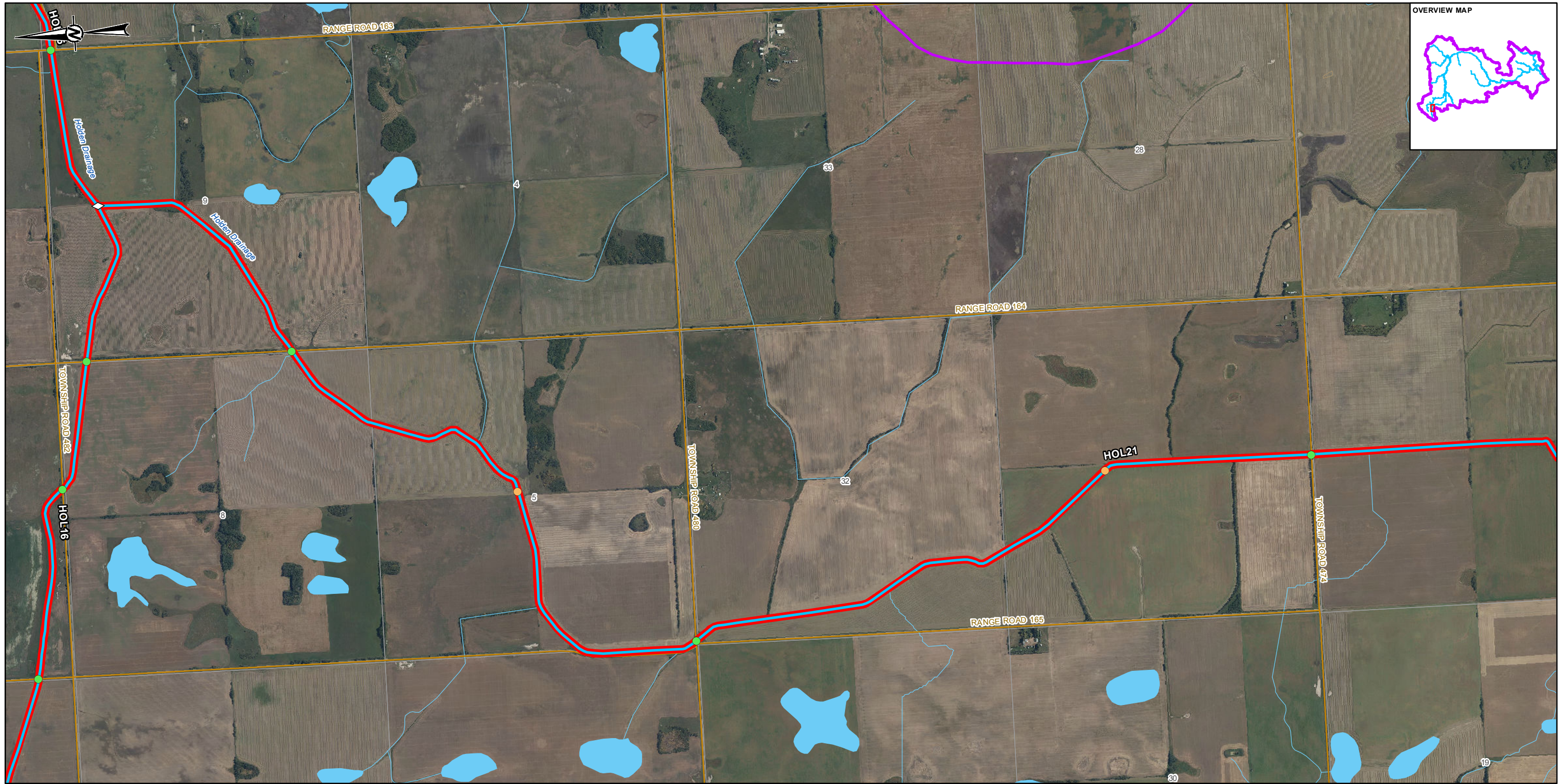
REFERENCE(S)
ALBERTA DIGITAL BASE DATA OBTAINED FROM ATALIS LTD © GOVERNMENT OF ALBERTA 2014.
ALL RIGHTS RESERVED, CANVEC, GEOBASE IHS ENERGY INC.
PROJECTION: UTM ZONE 12 DATUM: NAD 83

PROJECT
AERIAL ASSESSMENT OF THE RIPARIAN AREAS OF THE
VERMILION RIVER

TITLE
HOLDEN DRAINAGE RIPARIAN HEALTH

PROJECT NO. 1534932	CONTROL	REV. 0	FIGURE A1-n6
------------------------	---------	-----------	------------------------

PATH: I:\2016\1534932\Maping\MXD\Vegetation\1534932_Riparian_Health\20000_Rev0.mxd PRINTED ON: 2016-03-29 AT: 3:24:55 PM



LEGEND

RIPARIAN HEALTH

GOOD

FAIR

POOR

BRIDGE

CULVERT

REACH START / END

CONTOUR (10 m)

STUDY REACH

STUDY AREA

RAILROAD

PRIMARY HIGHWAY

SECONDARY HIGHWAY

LOCAL ROAD

WATERCOURSE

WATERBODY

CLIENT

NORTH SASKATCHEWAN WATERSHED ALLIANCE

CONSULTANT

YYYY-MM-DD

2016-03-21

DESIGNED

VC

PREPARED

DR

REVIEWED

CS

APPROVED

VC

REFERENCE(S)

ALBERTA DIGITAL BASE DATA OBTAINED FROM ATALIS LTD © GOVERNMENT OF ALBERTA 2014.
ALL RIGHTS RESERVED, CANVEC, GEOBASE IHS ENERGY INC.
PROJECTION: UTM ZONE 12 DATUM: NAD 83

PROJECT

AERIAL ASSESSMENT OF THE RIPARIAN AREAS OF THE VERMILION RIVER

TITLE

HOLDEN DRAINAGE RIPARIAN HEALTH

PROJECT NO.

1534932

CONTROL

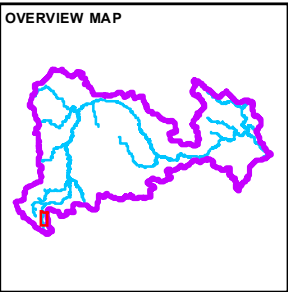
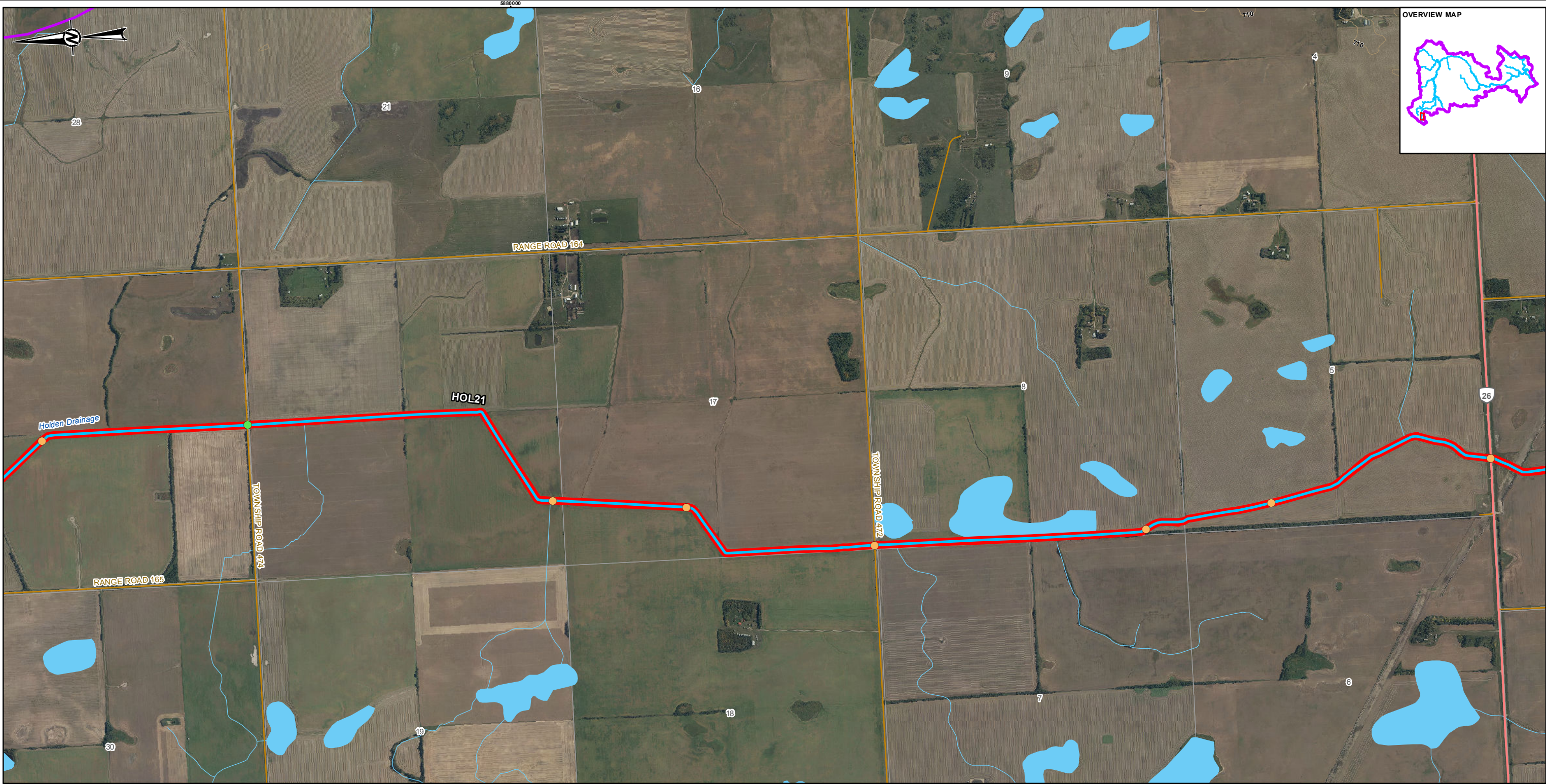
REV.

0

FIGURE

A1-n7

IF THIS MEASUREMENT DOES NOT MATCH WHAT IS SHOWN, THE SHEET SIZE HAS BEEN MODIFIED FROM: ANSI B



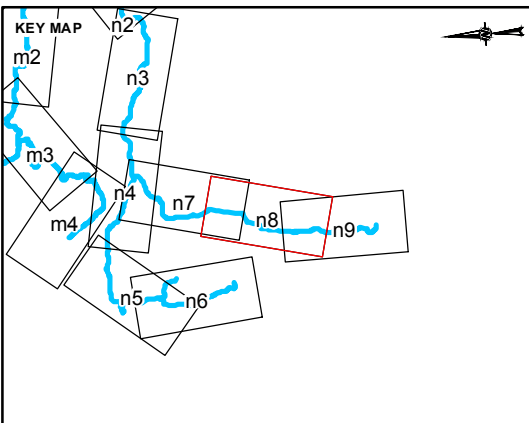
LEGEND

RIPARIAN HEALTH

- GOOD
- FAIR
- POOR

- BRIDGE
- CULVERT
- CONTOUR (10 m)
- STUDY REACH
- STUDY AREA

- RAILROAD
- PRIMARY HIGHWAY
- SECONDARY HIGHWAY
- LOCAL ROAD
- WATERCOURSE
- WATERBODY



CLIENT
NORTH SASKATCHEWAN WATERSHED ALLIANCE

CONSULTANT	YYYY-MM-DD	2016-03-21
	DESIGNED	VC
	PREPARED	DR
	REVIEWED	CS
	APPROVED	VC



REFERENCE(S)
ALBERTA DIGITAL BASE DATA OBTAINED FROM ATALIS LTD © GOVERNMENT OF ALBERTA 2014.
ALL RIGHTS RESERVED, CANVEC, GEOBASE IHS ENERGY INC.
PROJECTION: UTM ZONE 12 DATUM: NAD 83

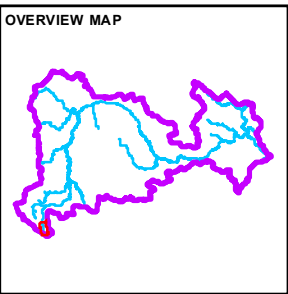
PROJECT
AERIAL ASSESSMENT OF THE RIPARIAN AREAS OF THE VERMILION RIVER

TITLE
HOLDEN DRAINAGE RIPARIAN HEALTH

PROJECT NO. 1534932	CONTROL	REV. 0	FIGURE A1-n8
------------------------	---------	-----------	------------------------

PATH: I:\2016\1534932\Maping\Maping\1534932_Riparian_Health\20000_Rev0.mxd PRINTED ON: 2016-03-29 AT: 3:25:06 PM

IF THIS MEASUREMENT DOES NOT MATCH WHAT IS SHOWN, THE SHEET SIZE HAS BEEN MODIFIED FROM: ANSI B



LEGEND

RIPARIAN HEALTH

GOOD

FAIR

POOR

CULVERT

REACH START / END

CONTOUR (10 m)

STUDY REACH

STUDY AREA

RAILROAD

PRIMARY HIGHWAY

SECONDARY HIGHWAY

LOCAL ROAD

WATERCOURSE

WATERBODY

CLIENT
NORTH SASKATCHEWAN WATERSHED ALLIANCE

CONSULTANT

YYYY-MM-DD	2016-03-21
DESIGNED	VC
PREPARED	DR
REVIEWED	CS
APPROVED	VC

REFERENCE(S)
ALBERTA DIGITAL BASE DATA OBTAINED FROM ATALIS LTD © GOVERNMENT OF ALBERTA 2014.
ALL RIGHTS RESERVED, CANVEC, GEOBASE IHS ENERGY INC.
PROJECTION: UTM ZONE 12 DATUM: NAD 83

PROJECT
AERIAL ASSESSMENT OF THE RIPARIAN AREAS OF THE VERMILION RIVER

TITLE
HOLDEN DRAINAGE RIPARIAN HEALTH

PROJECT NO. 1534932	CONTROL	REV. 0	FIGURE A1-n9
------------------------	---------	-----------	-----------------

PATH: I:\2015\1534932\Mapping\MXD\Vegetation\1534932_Riparian_Health_v20000_Rev0.mxd PRINTED ON: 2016-03-29 AT: 3:25:19 PM

IF THIS MEASUREMENT DOES NOT MATCH WHAT IS SHOWN, THE SHEET SIZE HAS BEEN MODIFIED FROM: ANSI B